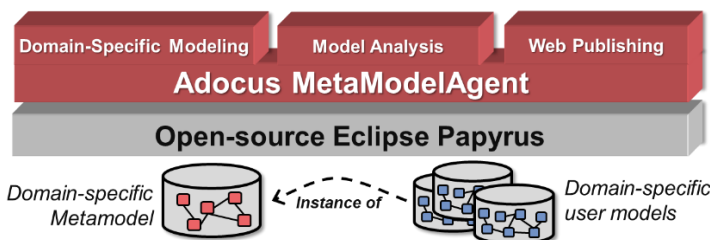


MetaModelAgent

UML-based Domain-specific Modeling,
Model Analytics & Web-Publishing
for Eclipse-based UML & UML-RT Modeling Tools

Define and use your own UML- based modeling language

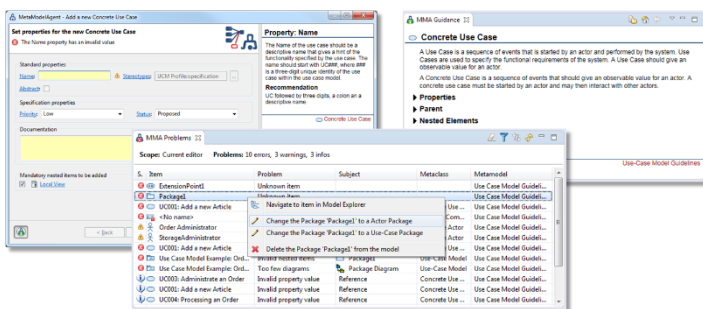
MetaModelAgent lets you easily define your own UML or UML-RT based domain-specific language using its unique powerful meta-model notation.



The metamodel is then used by MetaModelAgent to turn your modeling tool into a domain-specific modeling tool with real-time model validation, adapted user interface, static model analytics and web-publish capabilities.

Take advantage of an adapted UI

Within a few days you will be able to provide a modeling tool environment to all your users that is completely adapted to your own domain-specific modeling language, making modeling more efficient and accurate than ever before.

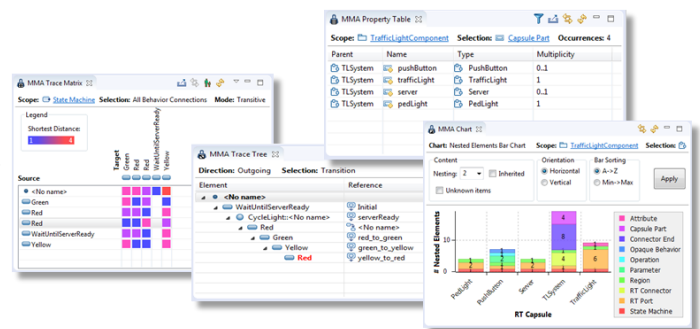


Available for Eclipse-based UML-Modeling Tools:

- IBM® Rational® Software Architect Designer (RSAD)
- IBM® Rational® Software Architect RealTime Extension (RSARTE)
- DevOps Model RealTime (former HCL RTist)
- Open-source Eclipse Papyrus™

Analyze all your models

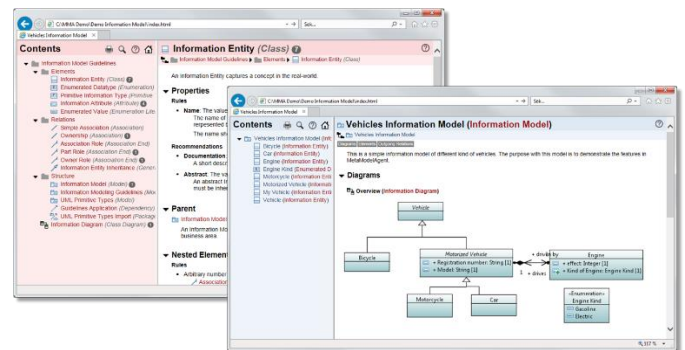
MetaModelAgent provides several additional interactive UI views to enable advanced static analysis of your models.



You can easily get graphical overviews and find unexpected complexities and relationship chains in your model.

Publish your models

MetaModelAgent provides web publishing of all your user models and guidelines based on your metamodels.



The generated website does not require a web-server and can be published to anyone without any license needed.

For more info, visit: www.metamodelagent.com.